

**ISO Fassade®***Save energy sustainably*

## Your advantages

- ✓ Excellent price
- ✓ High quality
- ✓ High precision
- ✓ Short assembling time

**ISO Fassade Element-****The world novelty in  
Facade Thermal Insulation**

«It is important to offer an inexpensive and quickly applicable External Thermal Insulation System. Then even more houseowner will decide for heat insulation and relieve the environment.»

*S. T. Mohseni, General Manager*

**ISO Fassade** GmbH

Middelicher Str. 305  
45892 Gelsenkirchen, Germany  
Phone: +49 209 405 35 16  
Fax: +49 209 405 35 18

E-Mail: [info@ISO Fassade.de](mailto:info@ISO Fassade.de), Internet: <http://www.ISO Fassade.de>



European Technical Approval





# Save up to 60% energy costs

ISO Fassade is the innovative & perfect solution

## Warm in winter

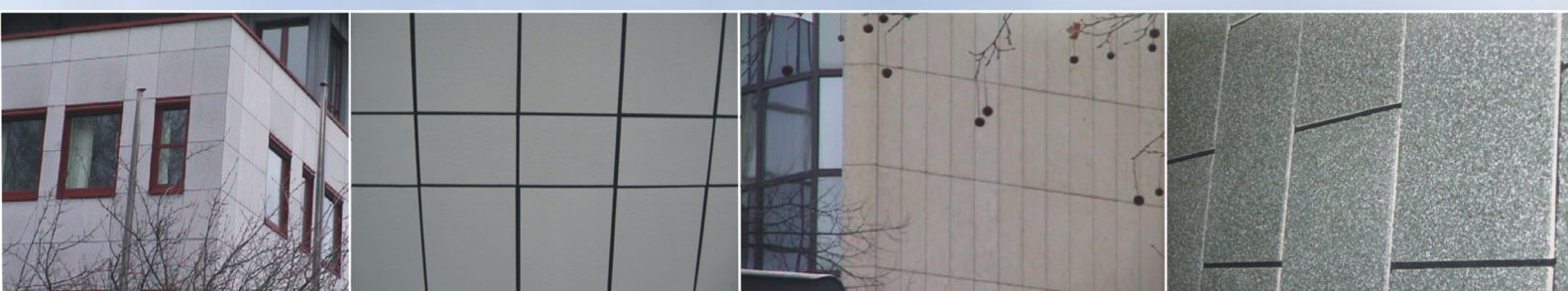


- ✓ Favourable Prices
- ✓ High quality
- ✓ High Precision
- ✓ Short assembling time
- ✓ Light weight (10 kg/m<sup>2</sup>)
- ✓ Fast and easy assembly regardless of weather conditions

Advantages of the ISO Fassade system in comparison to traditional External Thermal Insulation Composite Systems (ETICS):

- Permanent tear resistance of the facades
- Significantly reduce costs for user by more than 50%
- Advanced off-site prefabricated facade elements
- No quality problems
- Shortening of the execution times by about 80%
- Easy and fast to assemble
- Easy to repair
- Facade Elements can be easily replaced
- No weather-related downtimes or building delays
- Minimal disturbance of the users of the building during the building measure

## Cool in summer







**ISO Fassade** - *Save up to 60% heating costs*

Today, the usual renovation technologies offer to house owners relatively few cases to carry out an energy-saving building renovation. The costs are still too high, the execution times too long and the disturbances by installation, noise and dirt too much.

ISO Fassade Element (facade element) is a quickly applicable and energy-friendly, innovative technology for facade isolation and restoration based on entirely pre-worked, highly heat insulating facade elements, which may be used for new and old buildings.

Facade element with natural fibre rendering was developed within the scope of a research project in the sector of the building physics of exterior walls at Ruhr University of Bochum in Germany. Due to this innovation two patents and two European technical approvals (ETA) were granted. In 2005 the system was awarded the Wuppertal Energy and Environmental Prize.

### ISOFacade-Unitherm:

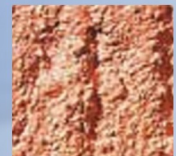
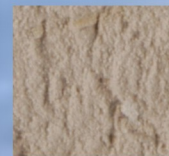
In the form of completely finished facade insulating panels consisting of a heat insulation layer, a mineral plaster mixture with alkali-resistant natural fibres as sub-layer and an extremely water repellent patent plaster layer. The elements are glued to the wall and if required dowelled.



## Various final coatings

ISO Fassade offers a large program of mineral and polymeric final coatings.

ISO Fassade precious plaster offers a extreme lasting protection against algae and mould fungus.



## The world of colours

Classic and modern colour spectrum in every structure.

With ISO Fassade Colours your personal wishes and colour combinations will be easily realised.



# IKOB-BKB BV

Ringveste 1,  
NL-3992 DD Houten  
Postbus 298  
NL-3990 GB Houten  
Tel: +31(0)30-635 80 60  
Fax: +31(0)30-635 06 86  
E-mail: [info@ikobbkb.nl](mailto:info@ikobbkb.nl)  
Website: [www.ikobbkb.nl](http://www.ikobbkb.nl)



Lid van de EOTA  
Member of EOTA

## European Technical Approval ETA-07/0163

Handelsnaam

**Trade name**

**ISOFacade- Unitherm**

Houder van de goedkeuring

**Holder of approval**

**ISO Fassade GmbH**

**Middelicherstraße 305**

**D-45892 Gelsenkirchen**

**Germany**

**Postfach 150117**

**D-45241 ESSEN**

**Germany**

**Tel.: +49-(0)-209 405 35 16 17**

**Fax: +49-(0)-209 405 35 18**

**e-Mail: [info@ISOFassade.com](mailto:info@ISOFassade.com)**

Algemeen type en gebruik van het  
bouwproduct

Buitengevelisolatiesysteem met een gepleisterde afwerking op  
geëxpandeerd polystyreenschuim (EPS) voor toepassing als  
thermisch isolerende gevelbekleding van gebouwen

**Generic type and use of construction  
product**

**External Thermal Insulation Composite System with rendering  
on expanded polystyrene (EPS) for the use as external  
insulation of building walls**

Geldig  
**Validity**

van  
**from**  
tot  
**to**

2007-07-16

2012-07-16

Fabrieken

**Manufacturing plants**

**ISO Fassade GmbH**

**Middelicherstraße 305**

**D-45892 Gelsenkirchen**

**Germany**

Deze Europese Technische Goedkeuring  
bevat:

**This European Technical Approval  
contains:**

14 bladzijden en een bijlage bestaande uit 3 bladen

**14 pages and an Annex of 3 pages**



Europese Organisatie voor Technische Goedkeuringen  
European Organisation for Technical Approvals  
Organisation pour l'Agrément Technique Européen  
Europäische Organisation für Technische Zulassungen



**CERTIFICATE OF FACTORY PRODUCTION CONTROL**  
**0957-CPD-0902**

# IKOBKB

In compliance with the Directive 89/106/EEG of the Council of European Communities of 21 December 1988 on the approximation of laws, regulations and administrative provisions of the Member States relating to the construction products (Construction Products Directive-CPD) amended by the Directive 93/68/EEG of the Council of European Communities of 22 July 1993, it has been stated that the construction product

**ISO facade Unitherm**

External Thermal Insulation Composite System (ETICS) for use on masonry and concrete walls placed on the market by

**ISO Fassade GmbH**  
**Middelicherstrabe 305**  
**D-45892 Gelsenkirchen**  
**Postfach 150117**  
**D-45241 ESSEN**  
**Germany**

and produced in the factory

**ISO Fassade GmbH**  
**Middelicherstrabe 305**  
**D-45892 Gelsenkirchen**  
**Germany**

is submitted by the manufacturer to the initial type-testing of the product and the factory production control and to the further testing of samples taken at the factory in accordance with a prescribed test plan and that the notified body **IKOB-BKB B.V., Ringveste 1, Postbus 298, 3990 GB Houten, NL**, has performed

- the initial inspection of the factory and of the factory production control and
- of the factory production control and performs the continuous surveillance, assessment and approval of the factory production control.

This certificate attests that all provisions concerning the attestation of conformity of factory production control described in the European Technical Approval with the number

**ETA-07/0163**

were applied and product fulfils all the prescribed requirements.

This certificate was first issued on 23.01.2009 and remains valid as long as the conditions laid down in the technical specification or the manufacturing conditions in the factory or the factory production control itself are not modified significantly.

Houten, 23 januari 2009

ir. P.K. van der Schuit  
algemeen directeur IKOB-BKB

**IKOB-BKB BV**  
Ringveste 1, Houten  
Postbus 298  
3990 GB Houten  
Tel. 030 635 80 60  
Fax 030 635 06 86  
info@ikobbkb.nl  
www.ikobbkb.nl





## Technical Data Sheet - German Products with Ü-Marking -

---

### ISOFacade-Kleber ( Adhesive Mortar )

Compressive Strength (class): P II with respect to DIN 18550 and CS III EN 998-1  
Compressive Strength : > 3.5 N/mm<sup>2</sup>  
Fire class : A1, non-flammable  
Water demand : ca. 6-7 l per 30 kg sack

### Dämmung ( Insulation )

#### Polystyrol-Hartschaumplatte

Size 50 x 100 cm, in different thicknesses

Expandierter Polystyrol-Hartschaumplatte with respect to EN 13163 (DIN 18164).  
Material class B1 with respect to DIN 4102, hard-flammable, Fire protection in Structures .  
Heat transmission class 035, U value of heat transmission  $\lambda_R = 0,035$  W/mK.  
ISOFacade Insulation are environment friendly.

### ISOFacade- Situ ( Undercoating )

Compressive Strength (class): P II with respect to DIN 18550 and CS III EN 998-1  
Compressive Strength : > 3.5 N/mm<sup>2</sup>  
Fire class : A1, non-flammable  
Thickness : ca. 5 mm

### ISOFacade-Silco ( Overcoating )

Compressive Strength (class): P II with respect to DIN 18550 and CS II EN 998-1  
Compressive Strength : > 2.5 N/mm<sup>2</sup>  
Fire class : A1, non-flammable  
Thickness : ca. 3 mm, in different grain sizes of 1 mm to 3 mm  
Colour : White or with respect to ISOFacade Colour Charts

**ISOFacade GmbH**

Middelicher Str. 305, 45892 Gelsenkirchen, Germany • Tel.: +49 209- 405 35 16 • Fax: +49 209- 405 35 18